

IN THIS ISSUE

- **SEND Briefing**
- **The Regional Annual SEND Conference - tickets selling fast!**
- **Learning About Autism**
- **Epilepsy - meeting the needs of children with epilepsy**



Welcome to Fusion SEND Hub, based at Talbot Specialist School in Sheffield. We work with a large number of schools and education providers in the region, offering support and training relating to special educational needs and disabilities (SEND). Our team of Consultant Teachers in SEND work together with providers to help secure the best outcomes for children and young people across all educational phases.

Our guiding values are:

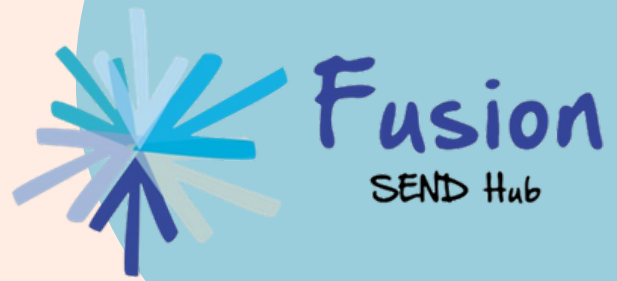
- **Advocacy** - *we believe in the rights of young people with SEND to receive the best from their education.*
- **Responsiveness** - *we respond to the diverse needs of our partners with openness and flexibility. We communicate clearly and quickly.*
- **Collaboration** - *we work strategically with our partners to meet their needs in the ways that work best for them and their young people.*
- **Specialism** - *we bring experience, knowledge and passion for SEND.*



Scan the QR code to
visit our
website or visit
[www.fusionsendhub.
co.uk](http://www.fusionsendhub.co.uk)

**Talbot Specialist School, Lees Hall Road,
Sheffield, S8 9JP**
enquiries@fusionsendhub.co.uk

SEND Briefings - all phases



Audience: All SENDCo's, EY/KS1/2/3, Post 16 and Supporting Services

Location: On-line via TEAMS

Cost: Free to Sheffield schools and settings

The SEND briefings are open to all phases and are intended for all professionals involved in the SEND system. Each session provides key updates and essential information, aligned with the city's current priorities. The agenda includes contributions from guest speakers representing a range of services, offering valuable insights and updates relevant to SEND practice across the city.

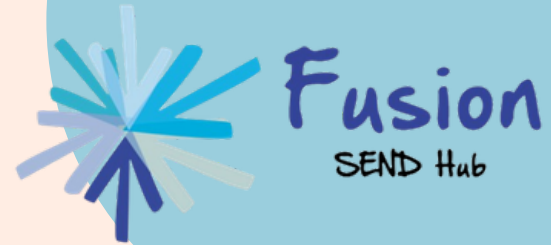
The briefings are delivered via Teams and a link will be sent to you nearer the time.

These briefings are FREE to Sheffield schools, but you are required to book a place and all bookings need to be made through [Learn Sheffield's Eventbrite Booking System](#).

- **16th June 2026, 3.45-4.45pm 9 (the last briefing of this academic year)**



The Regional Annual SEND Conference - “*SEND Forward: Evidence, Insight and Action*”



Location: Crowne Plaza Royal Victoria, Victoria Station Road,
Sheffield, S4 7YE

Date: 11th June 2026

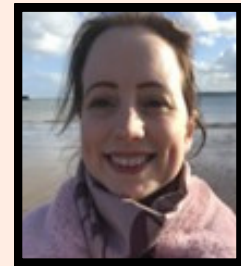
Time: 9am-4pm

Cost: £100 per person with lunch included

Please join us for this years Regional Annual SEND Conference. The day is aimed at all educational professionals who work with children and young people in any area of SEND.

Our speakers for the day are:

Dr Lauren Powell, Senior Lecturer in Psychology and Education, Sheffield University – “From Deficit To Difference: Embracing Neurodiversity In Mainstream Education”



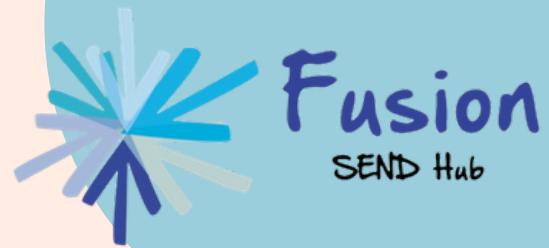
Lauren is a researcher whose work centres neurodivergent lived experience through participatory, co-produced methodologies. She co-created two nationally adopted UK psychoeducational resources—The ADHD Hero Activity Book and Learning About Autism—developed with neurodivergent children and young people and now used across NHS services, schools, and local authorities. Her research increasingly informs national policy. Lauren is a co-author of several Child of the North parliamentary reports on autism assessment, SEND/alternative provision, and early years inequalities, and contributed to national reviews of health inequities and the Autism Act 2009. A late-diagnosed autistic and ADHD academic, she delivers neuroinclusive training for universities, schools, and local authorities and supervises doctoral research on neurodivergence.

Lauren will explore how mainstream schools can embrace neurodiversity by moving away from deficit-based approaches towards inclusive, strengths-focused practice. Drawing on research, lived experience, and co-produced psychoeducation resources, her talk will examine the neurodiversity paradigm, the importance of affirming language, and practical strategies to support neurodivergent learners. Attendees will leave with concrete ideas to create more inclusive environments where neurodivergent children can thrive.



SEND Conference

11th June 2026



Karima Esmail, Co-Founder, Dynamo Maths and Puffin Maths – “Unlocking potential with maths difficulties: from screening to targeted support”.

Karima is an international speaker, author and advocate for children and adults with special educational needs and disabilities. Co-creator of numerous dyscalculia screeners and interventions she has dedicated her career to ensuring no learner at risk of dyscalculia goes unnoticed. A Chartered Engineer and former Senior Lecturer, Karima works globally with schools, charities, governments and NGOs to champion inclusive practice. Karima is passionate about sharing knowledge, sparking collaboration, and celebrating every learner’s potential.

Gary Aubin, Whole Education Director of SEND, EEF SEND Associate, Curriculum and Assessment Review panel member, author - “Having Impact as a SENCo”



Gary Aubin is the author of *The Lone SENDCO*, a handbook of 300 questions and answers for busy SENDCO’s, and *The Parent's Guide to SEND*. He is the Director of SEND Programmes and Networks for Whole Education and served on the Labour Government's Curriculum and Assessment Review panel.

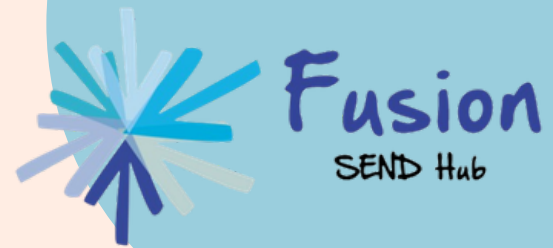
Gary is also the Education Endowment Foundation's SEND Associate. In this role, he has worked extensively on sharing the evidence base behind high-quality teaching for SEND, as well as advised on the development of the SENCo NPQ. As a Consultant, Gary has spoken internationally, advised the BBC, written content for the National Institute of Teaching and given talks to hundreds of Trust, Local Authority and school audiences. Gary led on SEND provision for a Multi Academy Trust of 10 primary and secondary schools for several years. He is a secondary teacher, former primary and secondary SENDCO and former secondary Head of Year. Gary also authors the SENDMattersUK blog.

Gary will address some of the many challenges of the SENDCO role, looking at how SENDCO’s might remain strategic alongside the many day-to-day challenges involved in leading SEND provision. It will focus particularly on how SENDCO’s might influence teaching and learning processes, and engage other stakeholders across their school, building the capacity of every teacher and leader to deliver their role inclusively. For more information about Gary, [click here](#).



SEND Conference

11th June 2026



**To book a place at our Conference, please follow the link to our Eventbrite Booking System:
<https://FusionSendHubConferenceJune2026.eventbrite.co.uk>**

*The cost of this event is £100 per person (with lunch included).
Payment is due at time of booking.*



Learning about Autism - a resource for children in mainstream education



By Olly Dean, Head of Fusion SEND Hub

Dr Lauren Powell from the University of Sheffield has produced a booklet for children in mainstream education, to help them learn more about autism. This is a great resource for families and schools, which children can complete by themselves or with adult support.

The print and web versions are available for free here:

<https://library.sheffieldchildrens.nhs.uk/learning-about-autism/>

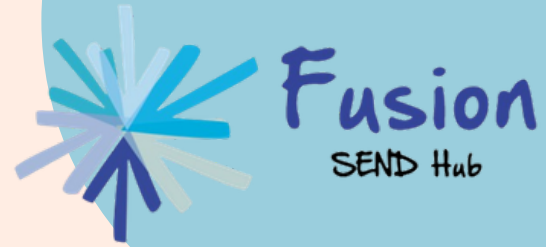
Dr Powell will be joining Fusion's Regional SEND Conference in Sheffield on Thursday 11th June, to discuss her research and share her educational resources with those in attendance. The event is a fantastic opportunity to hear from specialists in their fields, to network, learn and enjoy a day of care and good food!

All details and booking information can be found on our Eventbrite Booking Page:

<https://FusionSendHubConferenceJune2026.eventbrite.co.uk>



Epilepsy: meeting the needs of young people with epilepsy



***By Jackie Naudin, Fusion Consultant Teacher
in SEND***

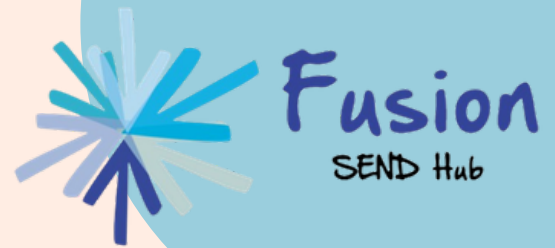
Epilepsy can be one of the most frightening and isolating conditions a child can experience. There's a loss of all sense of safety – not knowing when and where their next seizure will happen, who'll be there and whether they'll be hurt.

Here are a couple of useful links providing free online educational training and lots more information about young people with epilepsy. I'd like to draw your attention to the co-occurring difficulties children with epilepsy may have and the social and emotional impact of the condition on their development beyond the academic challenges.

<https://www.youngepilepsy.org.uk/about-epilepsy/common-associated-conditions>

<https://www.epilepsy.org.uk/living/parents-and-children/just-for-kids>





Fusion SEND Hub's newsletter is sent to all contacts on our database. Please contact us if you do not wish to be included in future issues or if you know of anyone that would like to be included in hearing about news, information and training in the area of SEND @ enquiries@fusionsendhub.co.uk

Fusion SEND Hub
c/o Talbot Specialsit School
Lees Hall Road
Sheffield
S8 9JP

